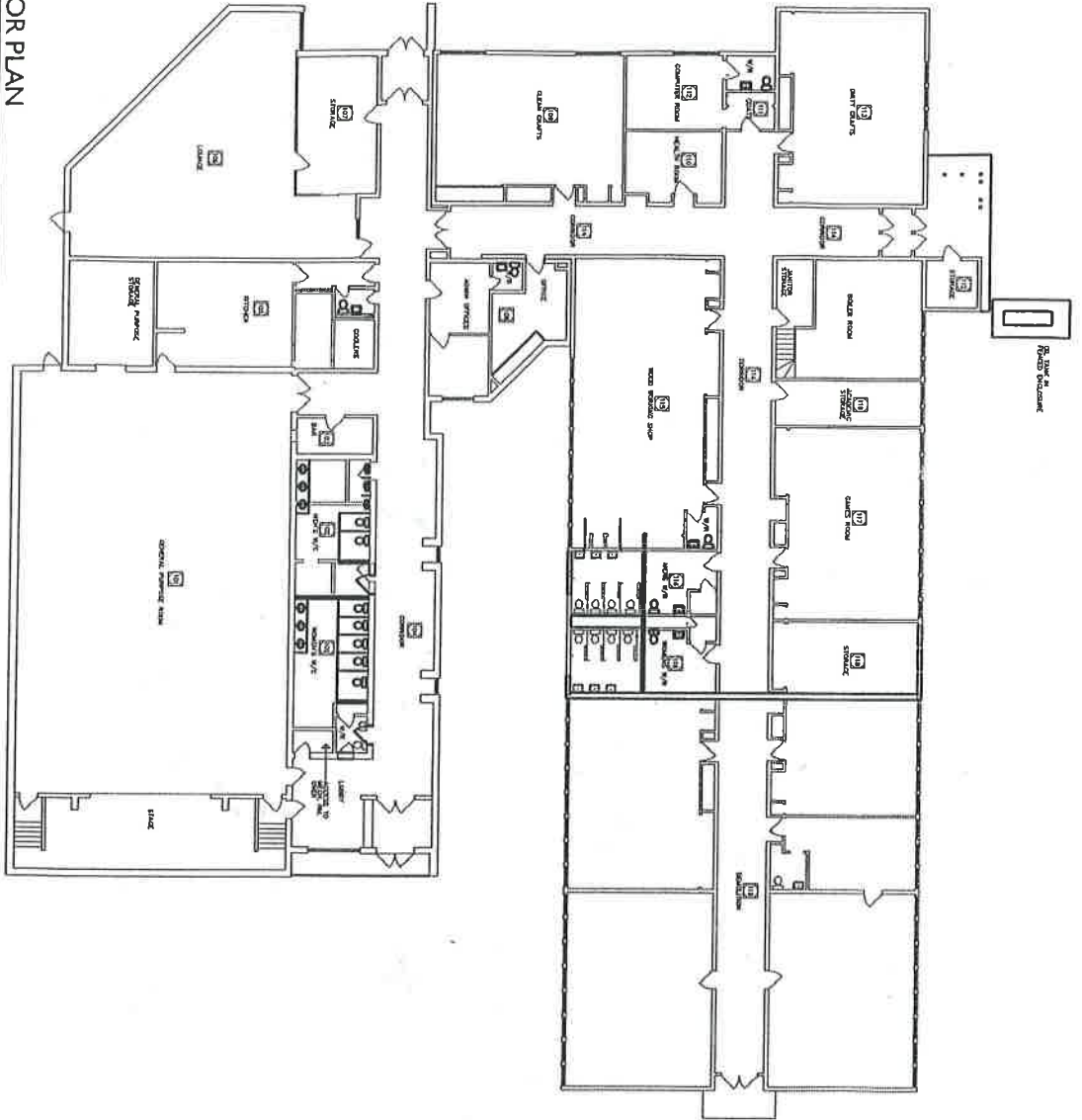
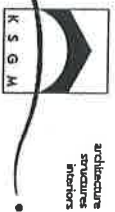


HALL FLOOR
 70' x 45'
 3,150 sqft.



FLOOR PLAN

N.T.S.



PROJECT NAME:
 TERRACE BAY SENIORS CLUB
 TERRACE BAY, ONTARIO
 PROJECT NO. 2007058

Koch-Simpson, Gillman, Hildebrandt & Partners
 121 Court St. N
 Thunder Bay, ON
 Canada, P7A 4V1
 phone 807.245.5582
 fax 807.245.5093
 www.kshp.ca

DATE: NOV. 2007
 DRAWN: JAN
 Sheet

PLAN