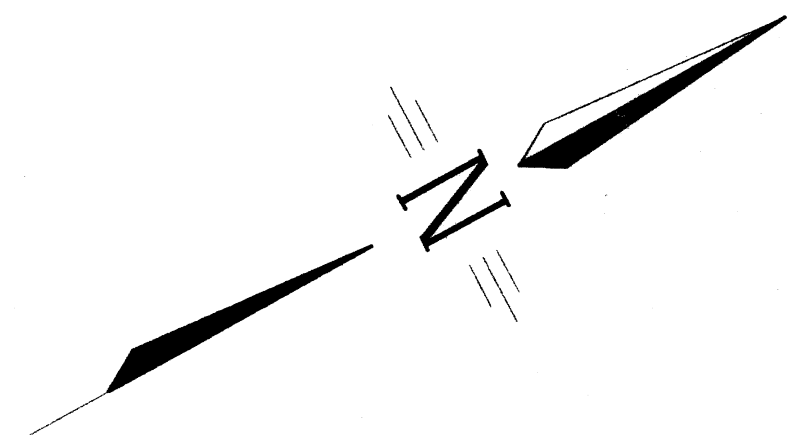
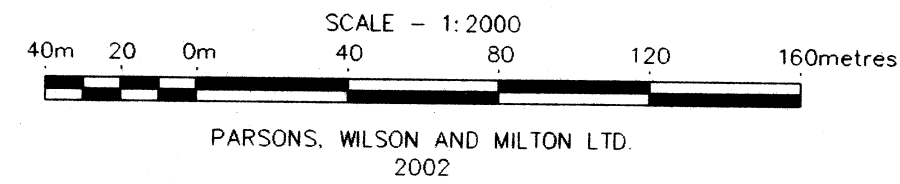


METRIC
DISTANCES SHOWN ON THIS PLAN ARE IN METRES AND CAN BE CONVERTED TO FEET BY DIVIDING BY 0.3048

PLAN OF SURVEY OF
PART OF LOCATION JK 300
TOWNSHIP OF STREY
TOWNSHIP OF TERRACE BAY
DISTRICT OF THUNDER BAY



PLAN 55R-11734

RECEIVED AND DEPOSITED
DATE 2002-06-05
BY S. DALZELL
LAND REGISTRAR FOR THE LAND TITLES
DIVISION OF THUNDER BAY

I REQUIRE THIS PLAN TO BE DEPOSITED
UNDER THE LAND TITLES ACT.
DATE MAY 9, 2002

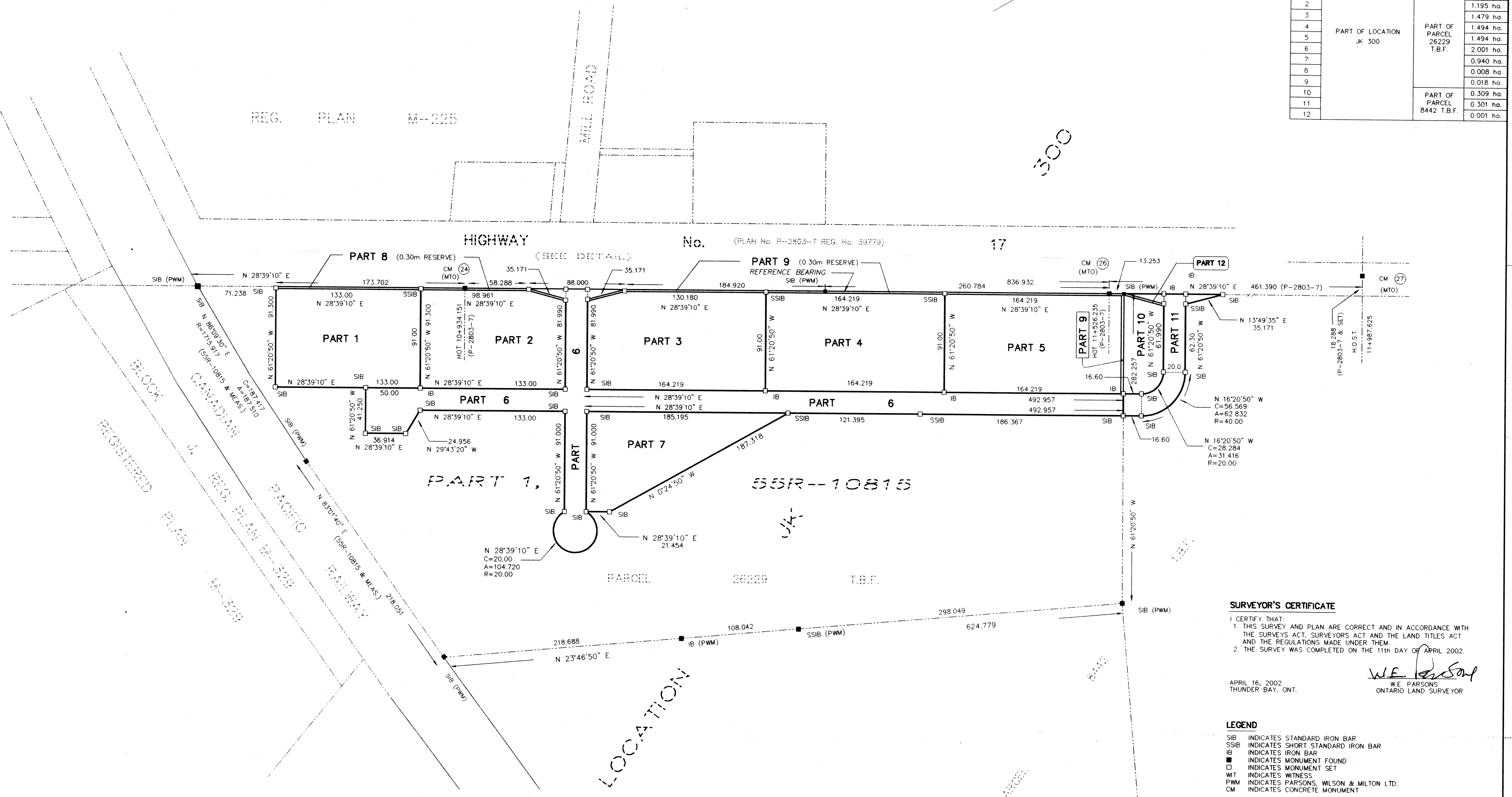
W.E. PARSONS
W.E. PARSONS
ONTARIO LAND SURVEYOR

PART	DESCRIPTION	PARCEL	AREA
1	PART OF LOCATION JK 300	PART OF PARCEL 26229 T.B.F.	1.210 ha.
2			1.195 ha.
3			1.479 ha.
4			1.494 ha.
5			1.494 ha.
6			2.001 ha.
7			0.940 ha.
8			0.008 ha.
9			0.018 ha.
10			0.309 ha.
11			0.301 ha.
12			PART OF PARCEL 8442 T.B.F.

REG. PLAN M-225

MILL ROAD

300



SURVEYOR'S CERTIFICATE
I CERTIFY THAT:
1. THIS SURVEY AND PLAN ARE CORRECT AND IN ACCORDANCE WITH THE SURVEY ACT, SURVEYORS ACT AND THE LAND TITLES ACT AND THE REGULATIONS MADE UNDER THEM;
2. THE SURVEY WAS COMPLETED ON THE 11th DAY OF APRIL 2002.

APRIL 16, 2002
THUNDER BAY, ONT.
W.E. PARSONS
ONTARIO LAND SURVEYOR

LEGEND
SIB INDICATES STANDARD IRON BAR
SSIB INDICATES SHORT STANDARD IRON BAR
IB INDICATES IRON BAR
■ INDICATES MONUMENT FOUND
□ INDICATES MONUMENT SET
WT INDICATES WITNESS
PWW INDICATES PARSONS, WILSON & MILTON LTD.
CM INDICATES CONCRETE MONUMENT

NOTE
BEARINGS ARE ASTRONOMIC AND ARE DERIVED FROM THE NORTHWESTERLY LIMIT OF PART 1, AS SHOWN ON DEPOSITED PLAN 55R-10815 HAVING A BEARING OF N 28°39'10" E

